

Reset Circuit Ensures Valid Supply Voltage

This article focuses on using an external MOSFET switch to ensure a valid system voltage is present before applying it to the load. This simple circuit uses a reset circuit and the MOSFET to provide a protection circuit during power-up.

It is often necessary to prevent a power supply's voltage from being applied to a load until the voltage has reached a certain minimum value. The circuit of Figure 1, consisting of two compact SOT23 packages, protects the load by blocking the supply voltage (nominally 5V) when it is below a pre-set threshold. IC1's threshold is 4.63V; four other versions of this IC provide thresholds of 4.38V, 3.08V, 2.93V, and 2.63V.

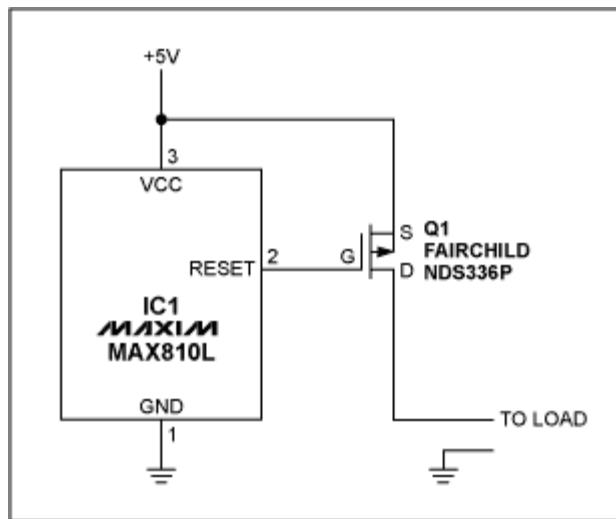


Figure 1. This protection circuit applies power to the load only when V_{CC} is above a pre-set threshold voltage.

IC1's active-high Reset output holds the p-channel MOSFET off by remaining high during power-up. It continues to remain high through the end of the reset timeout period (140ms minimum), which is initiated by IC1 as V_{CC} passes through the 4.63V threshold. If V_{CC} remains above 4.63V after the timeout has expired, Reset goes low, turns on Q1, and applies V_{CC} to the load. Q1's on-resistance (0.2Ω for $V_{GS} = 4.5V$) can deliver 1A of supply current with a drop of only 200mV.

If V_{CC} falters and drops below the threshold during the timeout, or if V_{CC} dips below threshold during normal operation, Q1 turns off and removes V_{CC} from the load. During power-down as well, Reset goes high and turns Q1 off as soon as V_{CC} drops below the threshold. IC1 maintains this gate drive for V_{CC} down to 1V; below that level, the load remains safe because V_{GS} is too low to turn Q1 back on.

This circuit can be implemented with any microprocessor-reset device offering an active-high, push-pull reset output. As alternatives offering other threshold levels and feature combinations, consider the MAX812, MAX824, MAX6327, and MAX6332.

MORE INFORMATION

MAX6327: [QuickView](#) -- [Full \(PDF\) Data Sheet \(144k\)](#) -- [Free Sample](#)

MAX6332: [QuickView](#) -- [Full \(PDF\) Data Sheet \(144k\)](#) -- [Free Sample](#)

MAX812: [QuickView](#) -- [Full \(PDF\) Data Sheet \(128k\)](#) -- [Free Sample](#)

MAX824: [QuickView](#) -- [Full \(PDF\) Data Sheet \(208k\)](#) -- [Free Sample](#)